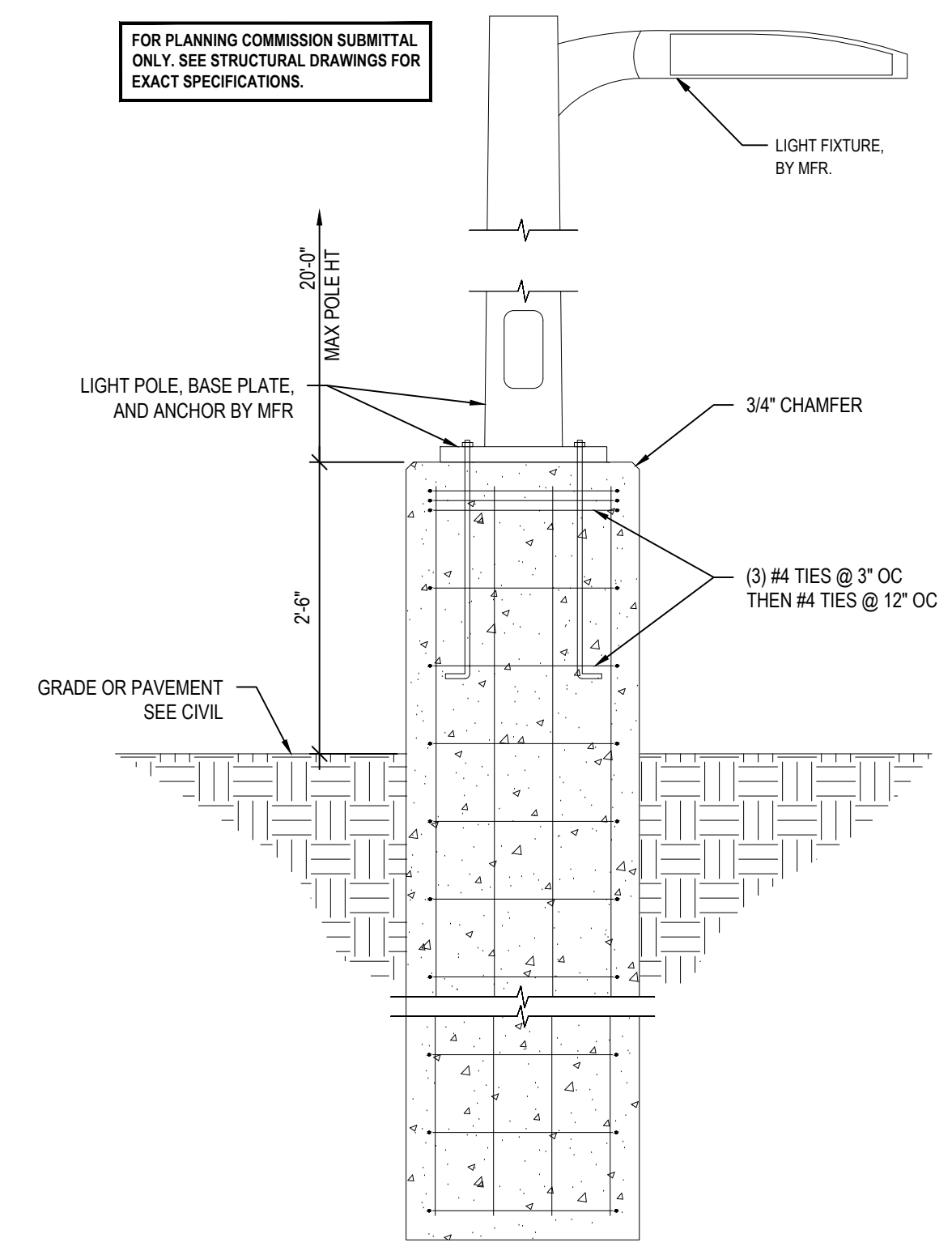


EXTERIOR LIGHTING FIXTURE SCHEDULE				
TYPE	LAMP	WATTS	DESCRIPTION	CATALOG NO.
SP1	LED	102	LED POLE MOUNTED FIXTURE WITH TYPE IV MEDIUM DISTRIBUTION & DARK BRONZE FINISH. MOUNTED ON A 20' TALL SQUARE STRAIGHT STEEL POLE.	LITHONIA# DSX1-LED-P3-30K-T4M-MVOLT- SPA-DDBXD POLE - LITHONIA# SSS-20-5G-DM19AS-DDBXD
SP2	LED	102	LED POLE MOUNTED FIXTURE WITH TYPE V MEDIUM DISTRIBUTION & DARK BRONZE FINISH. MOUNTED ON A 20' TALL SQUARE STRAIGHT STEEL POLE.	LITHONIA# DSX1-LED-P3-30K-T5M-MVOLT- SPA-DDBXD POLE - LITHONIA# SSS-20-5G-DM19AS-DDBXD

STATISTICS (VALUES ARE MAINTAINED)					
Description	Avg	Max	Min	Max/Min	Avg/Min
PARKING FIELD	2.0 fc	3.4 fc	0.9 fc	3.8:1	2.2:1
PROPERTY LINE	0.1 fc	1.6 fc	0.0 fc	N/A	N/A



1 TYPICAL LIGHT POLE BASE DETAIL
PH1.0 SCALE: 3/4"=1'-0"

N PHOTOMETRIC SITE PLAN
SCALE 1" = 20'-0"



STORE:
RAISING CANE'S RESTAURANT
494 LINCOLN ST.
WORCESTER, MA 01605
PROTOTYPE: P6-V-Av
SCHEME: B
RESTAURANT #RC1233



THIS DOCUMENT CONTAINS INFORMATION PROPRIETARY TO ADA ARCHITECTS, INC. UNAUTHORIZED USE OF THESE DOCUMENTS IS EXPRESSLY PROHIBITED UNLESS AGREED UPON IN WRITING.

ENGINEER INFORMATION:

SHEET REVISIONS		
#	DATE	TYPE
1		
2		
3		
4		
5		
6		
7		
8		
9		
10		

PHOTOMETRIC SITE PLAN

DATE: 10/1/2024
JOB NO. 24164

PH1.0
SHEET NO.

Restaurant Support Office
6800 Bishop Road, Plano, TX 75024
Tel: 972-769-3100 Fax: 972-769-3101

17710 Detroit Avenue, Lakewood, Ohio 44107
Phone (216) 321-3134 Fax (216) 321-4624
www.adaarchitects.com



Restaurant Support Office
6800 Bishop Road, Plano, TX 75024
Tel: 972-769-3100 Fax: 972-769-3101

STORE:
RAISING CANE'S RESTAURANT
494 LINCOLN ST.
WORCESTER, MA 01605
PROTOTYPE: P6-V-05
SCHEME: B
RESTAURANT #RC1233



1770 Detroit Avenue
Lakewood, Ohio 44107
Phone (216) 521-5134 Fax (216) 521-4624
www.adaarchitects.com

THIS DOCUMENT CONTAINS INFORMATION PROPRIETARY TO ADA ARCHITECTS, INC. UNAUTHORIZED USE OF THESE DOCUMENTS IS EXPRESSLY PROHIBITED UNDER PENALTY OF WRITING.

ENGINEER INFORMATION:

SHEET REVISIONS table with columns: #, DATE, TYPE

EXTERIOR LIGHT FIXTURE CUT SHEETS

DATE: 10/1/2024
JOB NO. 24164

PH1.1 SHEET NO.

D-Series Size 1 LED Area Luminaire Fixture Type SP1. Includes specifications (EPA, Length, Width, Height H1, Height H2, Weight) and a cutaway diagram.

Ordering Information table for Fixture Type SP1. Includes columns for DSX1 LED, P3, 30K, 70CRI, T4M, MVOLT, SPA. Includes sub-tables for Control options, Shipped installed, and DDBXD.

D-Series Size 1 LED Area Luminaire Fixture Type SP2. Includes specifications (EPA, Length, Width, Height H1, Height H2, Weight) and a cutaway diagram.

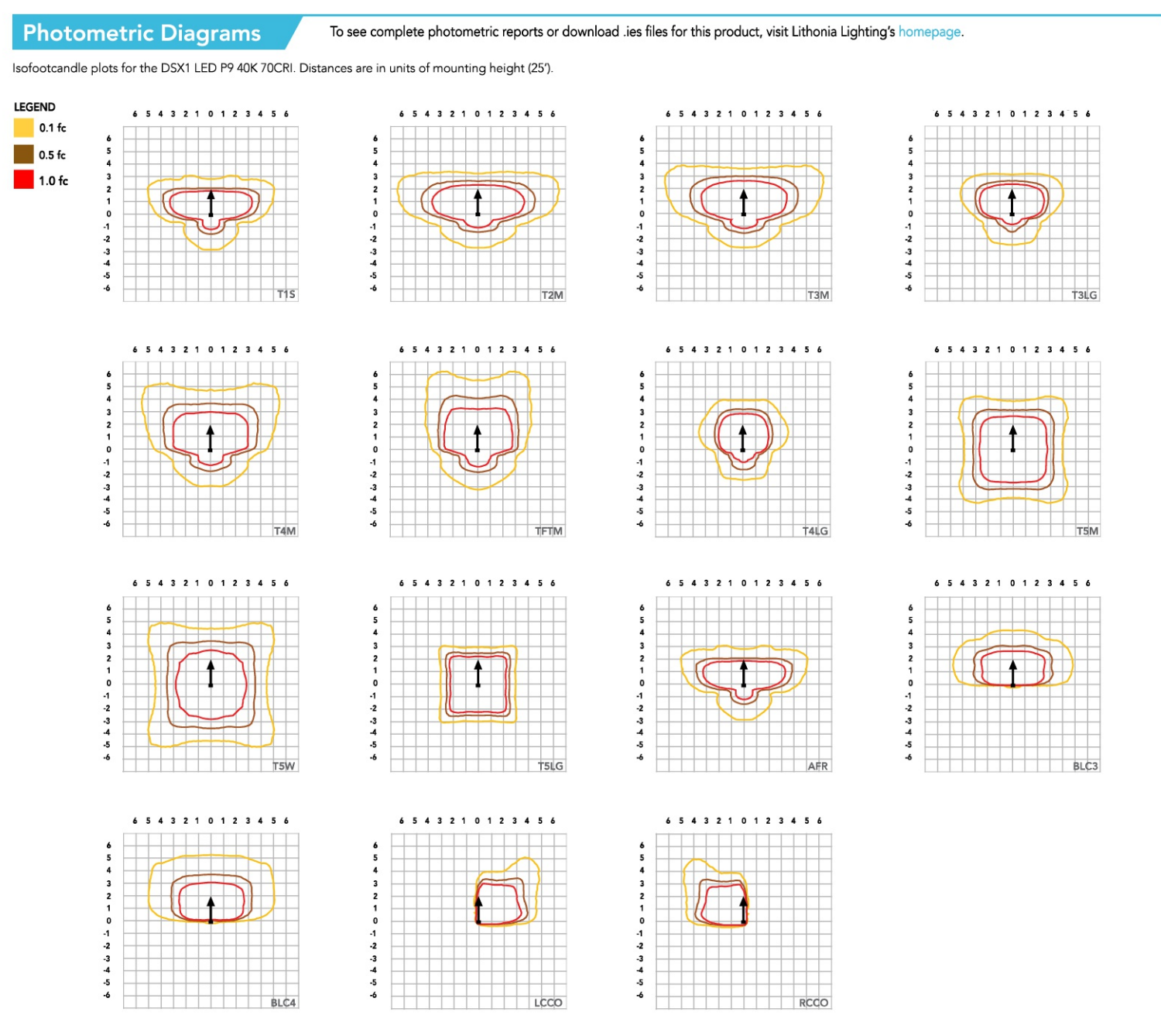
Ordering Information table for Fixture Type SP2. Includes columns for DSX1 LED, P3, 30K, 70CRI, T5M, MVOLT, SPA. Includes sub-tables for Control options, Shipped installed, and DDBXD.

Ordering Information and Accessories section. Includes a list of accessories and notes regarding compatibility and ordering.

Shield Accessories section. Includes images and descriptions for External Glass Shield (EGSR) and House Side Shield (HS).

Drilling and Tenon Mounting Slipfitter section. Includes diagrams for handhole orientation and a table for mounting options.

DSX1 Area Luminaire - EPA table. Includes columns for Feature Quantity & Mounting Configuration, Single DSX1, 2 or 180 DSX1, 2 or 90 DSX1, 3 or 120 DSX1, 4 or 90 DSX1.



Performance Data section including Lumen Ambient Temperature (LAT) Multipliers, Projected LED Lumen Maintenance, FAO Dimming Settings, Motion Sensor Default Settings, and Controls Options.

Performance Data section including Electrical Load, Lumen Output, Lumen Color Temperature / Color Rendering Multipliers, and Controls Options.

Performance Data section including Lumen Output table and Controls Options table.

Performance Data section including Lumen Output table and Controls Options table.

Performance Data section including Lumen Output table and Controls Options table.



Restaurant Support Office
6800 Bishop Road, Plano, TX 75024
Tel: 972-769-3100 Fax: 972-769-3101

STORE:
RAISING CANE'S RESTAURANT
494 LINCOLN ST.
WORCESTER, MA 01605
PROTOTYPE: P6-V-1605
SCHEME: B
RESTAURANT #RC1233



THIS DOCUMENT CONTAINS INFORMATION PROPRIETARY TO ADA ARCHITECTS, INC. UNAUTHORIZED USE OF THESE DOCUMENTS IS EXPRESSLY PROHIBITED UNLESS AGREED UPON IN WRITING.

ENGINEER INFORMATION:

SHEET REVISIONS		
#	DATE	TYPE
1		
2		
3		
4		
5		
6		
7		
8		
9		
10		

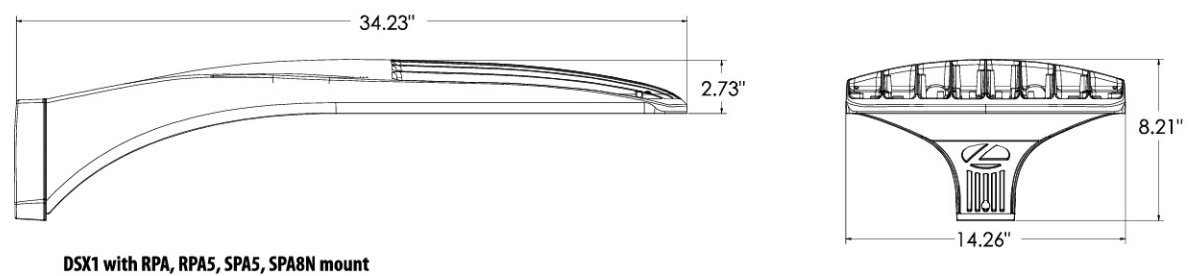
EXTERIOR LIGHT FIXTURE CUT SHEETS

DATE: 10/1/2024

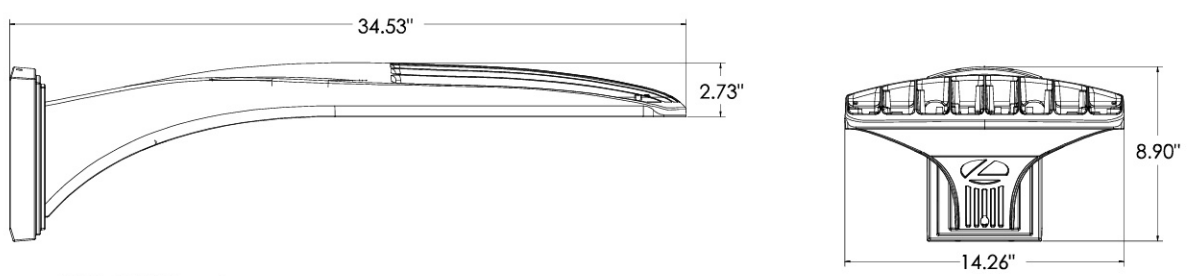
JOB NO. 24164

PH1.2
SHEET NO.

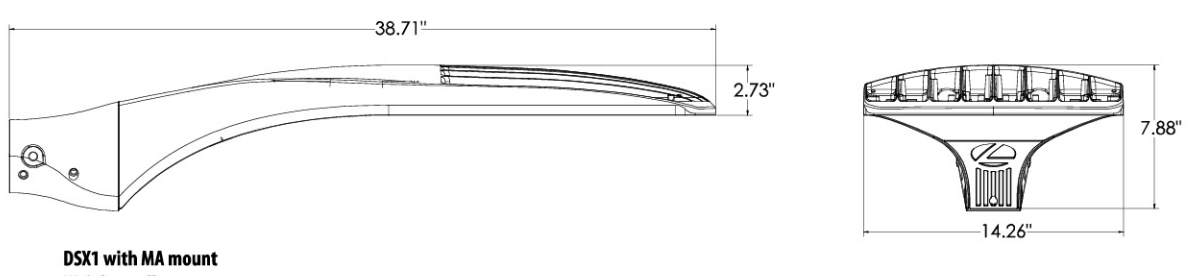
Dimensions



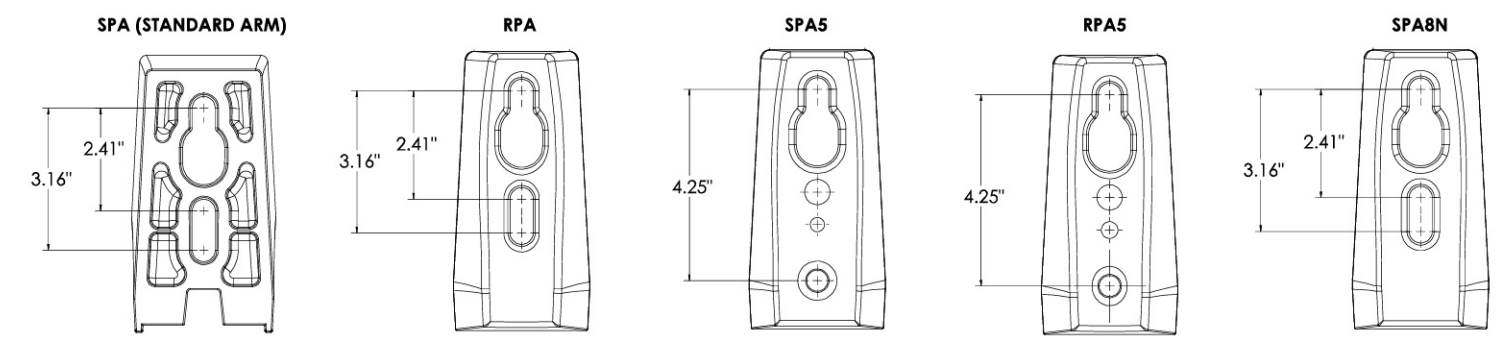
DSX1 with RPA, SPAS, SPAS, SPAN mount
Weight: 36 lbs



DSX1 with WBA mount
Weight: 38 lbs



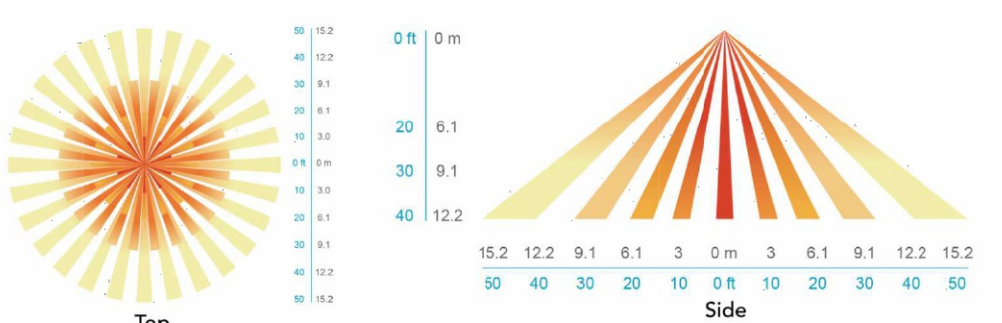
DSX1 with MA mount
Weight: 39 lbs



LITHONIA LIGHTING
One Lithonia Way • Conyers, Georgia 30012 • Phone: 1-800-705-SERV (7378) • www.lithonia.com
© 2011-2023 Acuity Brands Lighting, Inc. All rights reserved.

DSX1-LED
Rev. 09/05/23
Page 9 of 10

nLight Control - Sensor Coverage and Settings



FEATURES & SPECIFICATIONS

INTENDED USE
The sleek design of the D-Series Size 1 reflects the embedded high performance LED technology. It is ideal for many commercial and municipal applications, such as parking lots, plazas, campuses, and streetscapes.

CONSTRUCTION
Single-piece die-cast aluminum housing has integral heat sink fins to optimize thermal management through conductive and convective cooling. Modular design allows for ease of maintenance and future light engine upgrades. The LED drivers are mounted in direct contact with the casting to promote low operating temperature and long life. Housing driver compartment is completely sealed against moisture and environmental contaminants (IP66). Vibration rated per ANSI C136.31 for 3G for SPA and MA, 1.5G for mountings RPA, SPAS, SPAS and SPAN. Low ESR (0.69 Hz) for optimized pole wind loading.

FINISH
Exterior parts are protected by a zinc-infused Super Durable TGIC thermoset powder coat finish that provides superior resistance to corrosion and weathering. A highly controlled multi-stage process ensures a minimum 3 mils thickness for a finish that can withstand extreme climate changes without cracking or peeling. Available in both textured and non-textured finishes.

Coastal Construction (CCE)
Optional corrosion resistant construction is engineered with added corrosion protection in materials and/or pre-treatment of base material under super durable paint. Provides additional corrosion protection for applications near coastal areas. Finish is salt spray tested to over 5,000 hours per ASTM B117 with scribe rating of 10. Additional lead-times may apply.

OPTICS
Precision-molded proprietary silicone lenses are engineered for superior area lighting distribution, uniformity, and pole spacing. Light engines are available in standard 3000 K, 4000 K and 5000 K (D-CRI) configurations. R/CRI configurations are also available. The D-Series Size 1 has zero uplight and qualifies as a Nighttime Friendly™ product, meaning it is consistent with the LEED® and Green Globes™ criteria for eliminating wasteful uplight.

ELECTRICAL
Light engine configurations consist of high-efficiency LEDs mounted to metal-core circuit boards to maximize heat dissipation and promote long life (up to L80,100,000 hours at 25°C). Class 1 electronic drivers are designed to have a power factor >0.98, THD <20%, and an expected life of 100,000 hours with <1% failure rate. Easily serviceable 10kV surge protection device meets a minimum Category C Low operation (per ANSI/IEEE C62.41.2).

STANDARD CONTROLS
The DSX1 LED area luminaire has a number of control options. DSX Size 1, comes standard with 0-10V dimming drivers. Dusk to dawn controls can be utilized via optional NEMA twin-lock photocell receptacles. Integrated motion sensor with on-board photocell features field-adjustable programming and are suitable for mounting heights up to 40 feet. Control option BL features a bi-level device that allows a second control circuit to switch all light engines to either 30% or 50% light output.

nLIGHT AIR CONTROLS
The DSX1 LED area luminaire is also available with nLight® AIR for the ultimate in wireless control. This powerful controls platform provides out-of-the-box basic motion sensing and photocell functionality and is suitable for mounting heights up to 40 feet. Once commissioned using a smartphone and the easy-to-use CLARITY app, nLight AIR equipped luminaires can be grouped, resulting in motion sensor and photocell group response without the need for additional equipment. Scheduled dimming with motion sensor over-ride can be achieved when used with the nLight Eclipse. Additional information about nLight Air can be found here.

INSTALLATION
Integral mounting arm allows for fast mounting using Lithonia standard #8 drilling and accommodates pole drilling's from 2.41 to 3.12" on center. The standard "SPA" option for square poles and the "RPA" option for round poles use the #8 drilling. For #6 pole drillings, use SPAS or RPAS. Additional mountings are available including a wall bracket (WBA) and mast arm (MA) option that allows luminaire attachment to a 2.3/8" horizontal mast arm.

LISTINGS
UL listed to meet U.S. and Canadian standards. UL Listed for wet locations. Light engines are IP66 rated, luminaire is IP66 rated. Rated for -40°C minimum ambient.

DesignLights Consortium® (DLC) Premium qualified product and DLC qualified product. Not all versions of this product may be DLC Premium qualified or DLC qualified. Please check the DLC Qualified Products List at www.designlights.org or www.dlc.com to confirm which versions are qualified.

International Dark-Sky Association (IDA) Fixture Seal of Approval (FSA) is available for all products on this page utilizing 3000K color temperature only.

BUY AMERICAN ACT
Product with the BAA option is assembled in the USA and meets the Buy American government procurement requirements under FAR, DFARS and DOT regulations. Please refer to www.acuitybrands.com/buy-american for additional information.

WARRANTY
5-year limited warranty. This is the only warranty provided and no other statements in this specification sheet create any warranty of any kind. All other express and implied warranties are disclaimed. Complete warranty terms located at: www.acuitybrands.com/support/warranty/terms-and-conditions

Note: Actual performance may differ as a result of end-user environment and application. All values are design or typical values, measured under laboratory conditions at 25 °C. Specifications subject to change without notice.

LITHONIA LIGHTING
One Lithonia Way • Conyers, Georgia 30012 • Phone: 1-800-705-SERV (7378) • www.lithonia.com
© 2011-2023 Acuity Brands Lighting, Inc. All rights reserved.

DSX1-LED
Rev. 09/05/23
Page 10 of 10



FEATURES & SPECIFICATIONS

INTENDED USE — These specifications are for USA standards only. Square Straight Steel is a general purpose light pole for up to 39-foot mounting heights. This pole provides a robust yet cost-effective option for mounting area lights and floodlights.

CONSTRUCTION — Pole shaft: The pole shaft is of uniform dimension and wall thickness and is made of a weldable, grade, hot-rolled, commercial-quality steel tubing with a minimum yield of 55 KSI (11-gauge, 0.120"), or 50 KSI (7-gauge, 0.179"). Shaft one-piece with full-length longitudinal high-frequency electric resistance weld. Uniformly square in cross-section with flat sides, small corner radii and excellent torsional qualities. Available shaft widths are 4", 5" and 6". Pole Top: Options include tenon top, drilled for side mount fixture, tenon with drilling (includes extra handle) and open top. Side drilled and open top poles include a removable top cap.

Handle: A reinforced handle with grounding provision is provided at 18" from the base on side A. Positioning the handle lower may not be possible and requires engineering review, consult Tech Support-Outdoor for further information. Every handle includes a cover and cover attachment hardware. The handle has a nominal dimension of 2.5" x 5".

Base Cover: A durable ABS plastic two-piece full base cover, finished to match the pole, is provided with each pole assembly. Additional base cover options are available upon request.

Anchor Base/Bolts: Anchor base is fabricated from steel that meets ASTM A36 standards and can be altered to match existing foundations; consult factory for modifications. Anchor bolts are manufactured to ASTM F1554 Standard grade 55, 55 KSI minimum yield strength and tensile strength of 75-95 KSI. Top threaded portion (minimum 12") is hot-dipped galvanized per ASTM A153.

HARDWARE — All structural fasteners are high-strength galvanized carbon steel. All non-structural fasteners are galvanized or zinc-plated carbon steel or stainless steel.

FINISH — Extra durable painted finish is coated with TGC (Tegadyde/Isocyanurate) Polyester powder that meets SA and SB classifications of ASTM D3359. Powder-coat finishes include Dark Bronze, White, Black, and Natural Aluminum colors. Architectural Colors and Special finishes are available by quote and include, but are not limited to Paint over Hot-dipped Galvanized, RAL Colors, Custom Colors and Extended Warranty Finishes.

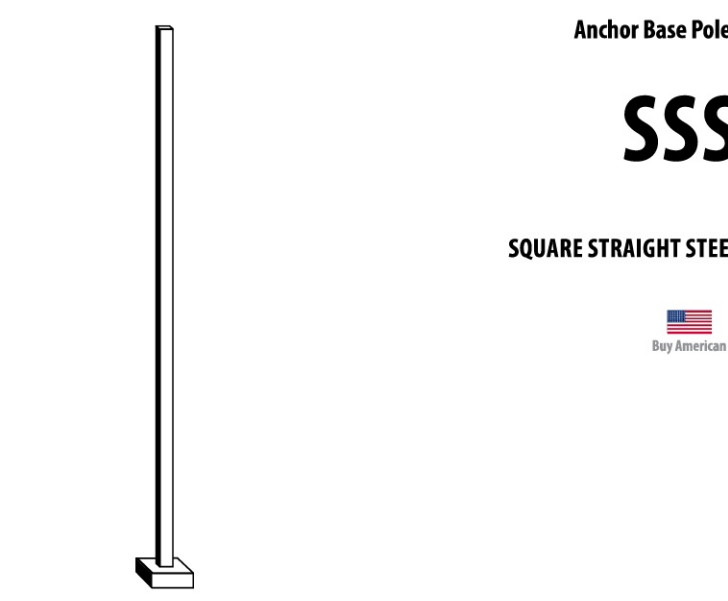
BUY AMERICAN — Product with the BAA option is assembled in the USA and meets the Buy American government procurement requirements under FAR, DFARS and DOT. Please refer to www.acuitybrands.com/buy-american for additional information.

INSTALLATION — Do not erect poles without having fixtures installed. Factory-supplied templates must be used when setting anchor bolts. Lithonia Lighting will not accept claim for incorrect anchorage placement due to failure to use Lithonia Lighting factory templates. If poles are stored outside, all protective wrapping must be removed immediately upon delivery to prevent finish damage. Lithonia Lighting is not responsible for the foundation design.

WARRANTY — 1-year limited warranty. This is the only warranty provided and no other statements in this specification sheet create any warranty of any kind. All other express and implied warranties are disclaimed. Complete warranty terms located at: www.acuitybrands.com/support/warranty/terms-and-conditions

Note: Actual performance may differ as a result of end-user environment and application. Specifications subject to change without notice.

Catalog Number	Fixture Type SP1 & SP2 Pole
Notes	
Type	



Anchor Base Pole
SSS
SQUARE STRAIGHT STEEL



SSS Square Straight Steel Poles

ORDERING INFORMATION Lead times will vary depending on options selected. Consult with your sales representative. Example: SSS 20 SC DM19 DBXD

SSS	20'-0"	5G	DM19AS	DBXD
Series	Nominal fixture mounting height	Nominal shaft base diameter (inches)	Mounting ¹	Finish ²
SSS1	10'-0" (9'-11 1/2") increments, add 6" to the pole height. Ex: 20'-0" equals 20'01.6"	4" 4 1/8 (0.120") 5" 5 1/8 (0.120") 6" 6 1/8 (0.120")	Tenon mounting PT Open top (includes top cap) T20 2-3/8" O.D. (2" NPS) T25 2-3/8" O.D. (2-1/2" NPS) T30 3-1/2" O.D. (3" NPS) T35 4" O.D. (3-1/2" NPS) KAC/RAC/AS/AS/REX/VE. Bolt mounting ³ DM19 1 at 90° DM28 2 at 180° DM28 PL 2 at 180° with one 5/8" flanged DM29 2 at 90° DM39 3 at 90° DM49 4 at 90° DM28AS 2 at 180° DM29AS 2 at 90° DM29AS 3 at 90° DM29AS 4 at 90° RAD drill mounting ⁴ DM19RAD 1 at 90° DM28RAD 2 at 180° DM29RAD 2 at 90° DM39RAD 3 at 90° DM49RAD 4 at 90° SSX drill mounting ⁵ DM19SSX 1 at 90° DM28SSX 2 at 180° DM29SSX 2 at 90° DM29SSX 3 at 90° DM49SSX 4 at 90°	Super durable paint colors DBXD Dark bronze DBXD Black DMAX Natural aluminum DMWHD White DMWHD 1/2" coupling ⁶ DMWHD 3/4" coupling ⁶ CR13 1/2" coupling ⁶ CR13 1" coupling ⁶ NPL12 1/2" threaded nipple ⁶ NPL3 3/4" threaded nipple ⁶ NPL1 1" threaded nipple ⁶ Other finishes Extra handle ⁷ NEC NEC 410.20 compliant grounded handle (Not UL Labeled) IC Interior coating ⁸ L/AB Lac and/or both (Includes anchor bolts not needed) TP Tamper resistant handle cover fasteners UL UL listed with label (Includes NEC compliant cover) BAA Buy American Act Compliant ⁹

- NOTE:**
1. Handle covers (HRC), full base covers (FBC) and top caps (TC) shipped separately. No need to call out in nomenclature. For additional parts please order as requirements.
 2. Wall thickness will be sighted with a "C" (11-gauge) or a "D" (7-gauge) in nomenclature: "C" = 0.120" / "D" = 0.119". Example: 20'-0" = 20'01.6" = 20'-0".
 3. PT open top poles include top cap. When ordering tenon mounting and drill mounting for the same pole, follow this example: DM28/T20. The combination includes a required extra handle.
 4. Refer to the fixture spec sheet for the correct drilling template pattern and orientation compatibility.
 5. All RAD drilling require a minimum top O.D. of 4".
 6. Inset 1" or 2" to designate fixture size e.g. DM19S12.
 7. On 4" and 5" poles, VD cannot be installed (Provisions (EHR, FPL, CPL) are located higher than 2/3 of the pole's total height. Example: Pole height is 25'. A provision cannot be placed above 16'.
 8. Specify location and orientation when ordering option. For "C": Specify the height above the base of pole in feet and inches, separate feet and inches with a ".". Example: 5' - 1.25" = 5'-2.25". For "D": Specify the height above the base of pole in feet and inches, separate feet and inches with a ".". Example: 5' - 1.25" = 5'-2.25".
 9. Horizontal arms 1/2" x 3/8" (D) tenon standard, with radius curve providing 1" rise and 2-3/8" O.D. (E) flexing two horizontal arm at the same height, specify with HKEY. Example: HKEY200.
 10. FC does not come with (FC) unless in handle cover. These must be supplied by contractor or electrician.
 11. Combination of tenon top and drill mount includes extra handle. (EHR) includes cover.
 12. Provides enhanced corrosion resistance.
 13. Use when mll certifications are required.
 14. Finish must be specified. Additional colors available, see Architectural Colors brochure linked here (Form No. 794.3).

Accessories: Order as separate catalog number.

PL D120	Plugs for ESX drilling
PL D76	Plugs for DM28AS drilling

LITHONIA LIGHTING
OUTDOOR One Lithonia Way Conyers, GA 30012 Phone: 800-705-SERV (7378) www.lithonia.com ©1994-2022 Acuity Brands Lighting, Inc. All rights reserved. Rev. 04/04/22

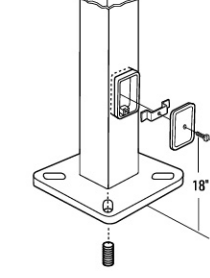
SSS Square Straight Steel Poles

TECHNICAL INFORMATION — EPA (ft²) with 1.3 gust

Catalog Number	Nominal Shaft Length (ft²)	EPA (ft²) with 1.3 gust	Gauge	80 MPH		90 MPH		100 MPH		Bolt circle (in.)	Bolt size (in. x in. x in.)	Approximate ship weight (lbs.)	
				Max. weight	Max. weight	Max. weight	Max. weight						
SSS104C	10	4.0x10.0	0.120"	11	30.6	765	23.8	595	18.9	473	8-9	34x18x3	75
SSS124C	12	4.0x12.0	0.120"	11	24.4	610	18.8	470	14.8	370	8-9	34x18x3	90
SSS144C	14	4.0x14.0	0.120"	11	19.9	498	15.1	378	11.7	293	8-9	34x18x3	100
SSS164C	16	4.0x16.0	0.120"	11	15.9	398	11.8	295	8.9	223	8-9	34x18x3	115
SSS184C	18	4.0x18.0	0.120"	11	12.6	315	9.2	230	6.7	168	8-9	34x18x3	125
SSS204C	20	4.0x20.0	0.120"	11	9.6	240	6.7	167	4.5	150	8-9	34x18x3	140
SSS204G	20	4.0x20.0	0.179"	7	14	350	11	275	8	200	8-9	34x30x3	198
SSS205C	20	5.0x20.0	0.120"	11	17.7	443	12.7	343	9.4	235	10-12	1x36x4	185
SSS205G	20	5.0x20.0	0.179"	7	28.1	703	21.4	535	16.2	405	10-12	1x36x4	265
SSS254C	25	4.0x25.0	0.120"	11	4.8	150	2.6	100	1	50	8-9	34x18x3	170
SSS254G	25	4.0x25.0	0.179"	7	10.8	270	7.7	188	5.4	135	8-9	34x30x3	245
SSS255C	25	5.0x25.0	0.120"	11	9.8	245	6.3	157	3.7	150	10-12	1x36x4	225
SSS255G	25	5.0x25.0	0.179"	7	18.5	463	13.3	333	9.5	238	10-12	1x36x4	360
SSS304G	30	4.0x30.0	0.179"	7	6.7	168	4.4	110	2.6	65	8-9	34x30x3	295
SSS305C	30	5.0x30.0	0.120"	11	4.7	150	2	50	—	—	10-12	1x36x4	265
SSS305G	30	5.0x30.0	0.179"	7	10.7	267	6.7	167	3.9	100	10-12	1x36x4	380
SSS306G	30	6.0x30.0	0.179"	7	19	475	13.2	330	9	225	11-13	1x36x4	520
SSS355G	35	5.0x35.0	0.179"	7	5.9	150	2.5	100	—	—	10-12	1x36x4	440
SSS354G	35	6.0x35.0	0.179"	7	12.4	310	7.6	190	4.2	105	11-13	1x36x4	540
SSS394G	39	6.0x39.0	0.179"	7	7.2	180	3	75	—	—	11-13	1x36x4	605

NOTE: 1-1/2" poles are based ASCE 7-99 wind map. For 1/2" ft increments, add 6" to the pole height. Ex: 20-4 equals 20ft 6in.

BASE DETAIL



POLE DATA

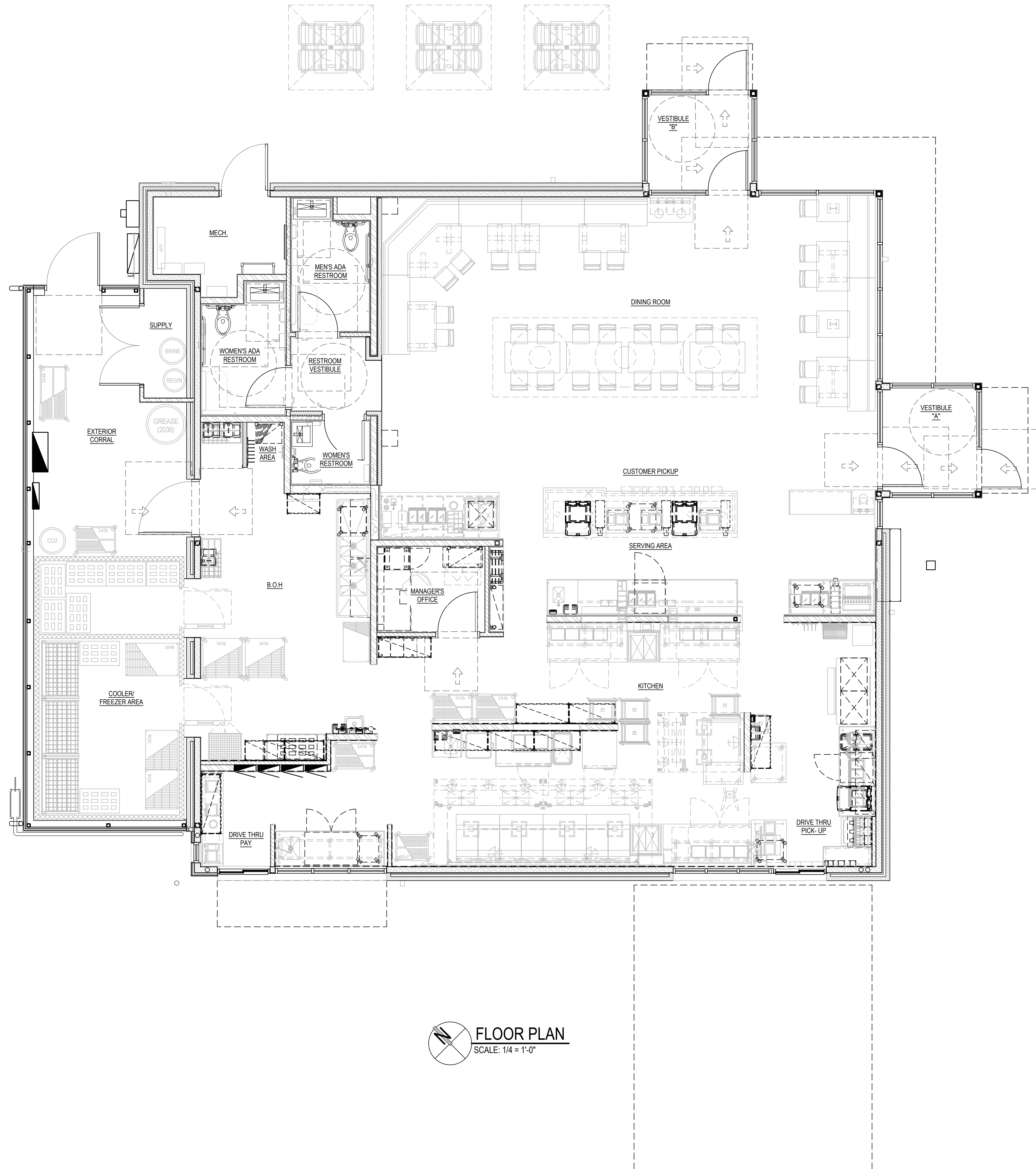
Shaft base size	Bolt circle A	Bolt projection B	Base square C	Base plate thickness	Template description	Anchor bolt description	Anchor bolt and template description
4" C	8" - 9"	3.25" - 3.75"	8" - 8.25"	0.75"	ARTEMPLATE P250004	AB18-0	ABSS-4C
4" C	8" - 9"	3.38" - 3.75"	8" - 8.25"	0.875"	ARTEMPLATE P250004	AB30-0	ABSS-4G
5" C	10" - 12"	3.5" - 4"	11"	1"	ARTEMPLATE P250010	AB36-0	ABSS-5
6" C	11" - 13"	4" - 4.50"	12.5"	1"	ARTEMPLATE P250011	AB36-0	N/A

HANDHOLE ORIENTATION

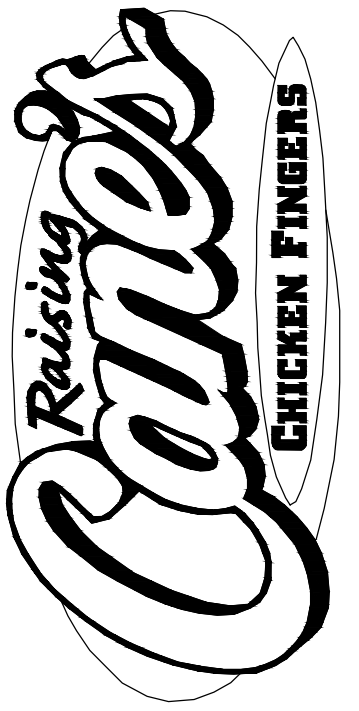
IMPORTANT INSTALLATION NOTES:

- Do not erect poles without having fixtures installed.
- Factory-supplied templates must be used when setting anchor bolts. Lithonia Lighting will not accept claim for incorrect anchorage placement due to failure to use Lithonia Lighting factory templates.
- If poles are stored outside, all protective wrapping must be removed immediately upon delivery to prevent finish damage.
- Lithonia Lighting is not responsible for the foundation design.
- Bolt circles have 4+ 1/2" tolerance.

LITHONIA LIGHTING
OUTDOOR One Lithonia Way Conyers, GA 30012 Phone: 800-705-SERV (7378) www.lithonia.com ©1994-2022 Acuity Brands Lighting, Inc. All rights reserved. Rev. 04/04/22



FLOOR PLAN
SCALE: 1/4" = 1'-0"



Restaurant Support Office
6800 Bishop Road, Plano, TX 75024
Tele: 972-769-3100 Fax: 972-769-3101

STORE:
RAISING CANE'S RESTAURANT
494 LINCOLN STREET
WORCESTER, MA 01605
PROTOTYPE: P6-V-Av
SCHEME: A/B
RESTAURANT #RC1233



17710 Detroit Avenue Lakewood, Ohio 44107
Phone (216) 521-5134 Fax (216) 521-4824
www.adaarchitects.com

THIS DOCUMENT CONTAINS INFORMATION PROPRIETARY TO ADA ARCHITECTS, INC. UNAUTHORIZED USE OF THESE DOCUMENTS IS EXPRESSLY PROHIBITED UNLESS AGREED UPON IN WRITING.

ENGINEER INFORMATION:

SHEET REVISIONS		
#	DATE	TYPE
1		
2		
3		
4		
5		
6		
7		
8		
9		
10		

FIXTURE PLAN

DATE: 09/30/24
JOB NO. 24164

FP-1
SHEET NO.

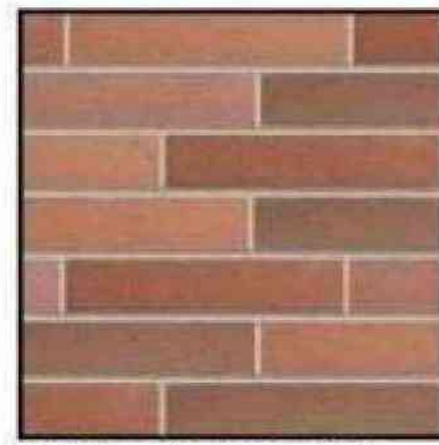
MATERIAL FINISHES



Reclaimed Metal Panel:
Vintage car hood occurs
at face of the tower
element only.



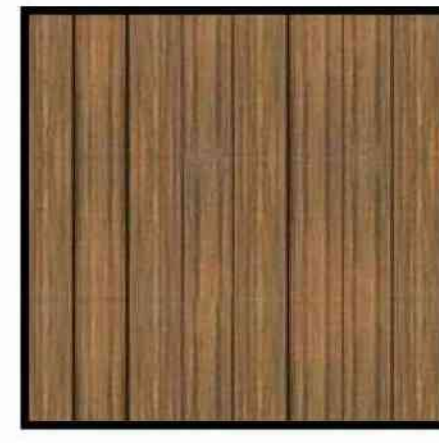
Aluminum storefront
system.
Finish: Anodized Black



Belden Norman Brick
Masonry Medium Range,
smooth, iron spot. Mortar to
match Solomon products
10h, weathered horizontal
strike. Vertical joints are
flush.



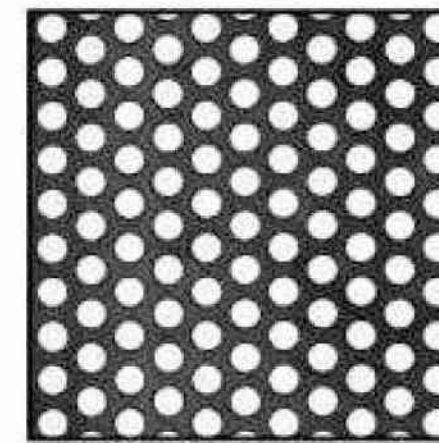
Standing Seam
Metal Roof



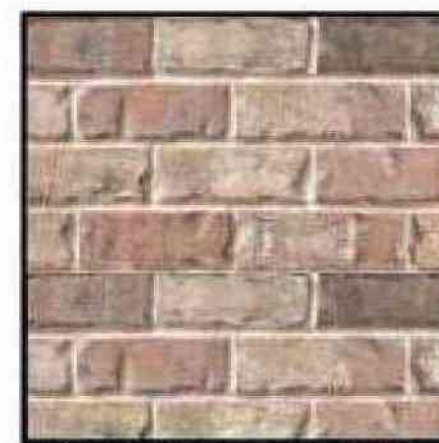
Composite Lumber Trex
Cladding
Color: Havana Gold



Panelized Fiber Cement
Cladding
Nichiha: Vintage Cedar



MCNICHOLS Perforated
Metal Panel
Powder Coat: Black



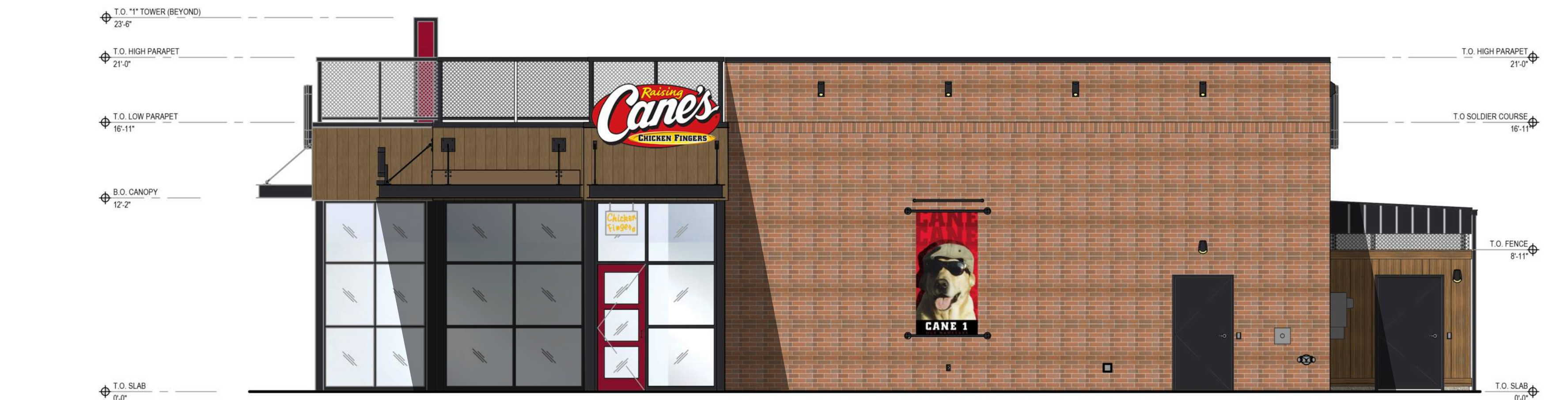
Boral: "Alamo" modular
brick, mortar to match
Solomon products 10h,
light buff sack rub finish.



P-10: Super Spec 23
Sherwin Williams Paint



4 FRONT ENTRY ELEVATION
EL-1 SCALE: 3/16" = 1'-0"



3 SIDE ELEVATION
EL-1 SCALE: 3/16" = 1'-0"



2 REAR ELEVATION
EL-1 SCALE: 3/16" = 1'-0"



1 DRIVE-THRU ELEVATION
EL-1 SCALE: 3/16" = 1'-0"



Restaurant Support Office
6800 Bishop Road, Plano, TX 75024
Tele: 972-769-3100 Fax: 972-769-3101

STORE:

RAISING CANE'S
RESTAURANT
494 LINCOLN STREET
WORCESTER, MA 01605
PROTOTYPE: P6-V-Av
SCHEME: A/B
RESTAURANT #RC1233



Lakewood, Ohio 44107
17710 Detroit Avenue
Phone (216) 521-5134
Fax (216) 521-4824
www.adaarchitects.com

THIS DOCUMENT CONTAINS INFORMATION
PROPRIETARY TO ADA ARCHITECTS, INC.
UNAUTHORIZED USE OF THESE DOCUMENTS IS
EXPRESSLY PROHIBITED UNLESS AGREED UPON IN
WRITING.

ENGINEER INFORMATION:

SHEET REVISIONS

#	DATE	TYPE
1		
2		
3		
4		
5		
6		
7		
8		
9		
10		

EXTERIOR
ELEVATIONS

DATE: 09/30/24

JOB NO. 24164

EL-1
SHEET NO.